

\$1,095,000 - 233055 Range Road 250, Rural Wheatland County

MLS® #A2256052

\$1,095,000

4 Bedroom, 3.00 Bathroom, 1,206 sqft
Residential on 7.00 Acres

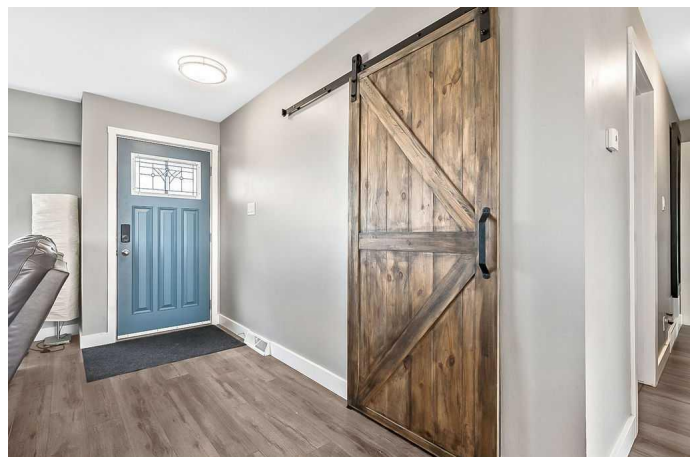
NONE, Rural Wheatland County, Alberta

This TERRIFIC 7 acre property only 10 minutes South of Strathmore, has everything for your country living enjoyment!! A fully renovated and fully developed 1206ft² bungalow, newer 30'x60' fully finished heated and insulated workshop, a new 5 box stall barn 36'x36', and outdoor riding arena and pasture and turnout pens for the horses!! This 4 bedroom 3 bath home has been upgraded and modernized substantially including a new kitchen, new flooring, paint, fixtures, bathrooms and utilities and offers a fully developed lower level with 9" ceilings and a large game/recreation room!! Located on a very quiet dead end road yet close to town for convenience. If you're a horse person, a mechanic or are hoping to be and want your own piece of property to enjoy the country living lifestyle then come have a look at this property today.

Built in 1970

Essential Information

| | |
|----------------|-------------|
| MLS® # | A2256052 |
| Price | \$1,095,000 |
| Bedrooms | 4 |
| Bathrooms | 3.00 |
| Full Baths | 3 |
| Square Footage | 1,206 |



| | |
|------------|----------------------------------|
| Acres | 7.00 |
| Year Built | 1970 |
| Type | Residential |
| Sub-Type | Detached |
| Style | Acreage with Residence, Bungalow |
| Status | Active |

Community Information

| | |
|-------------|------------------------|
| Address | 233055 Range Road 250 |
| Subdivision | NONE |
| City | Rural Wheatland County |
| County | Wheatland County |
| Province | Alberta |
| Postal Code | T1P 1J6 |

Amenities

| | |
|-----------|---|
| Utilities | Electricity Connected, Heating Paid For, Propane |
| Parking | Insulated, 220 Volt Wiring, Quad or More Detached |

Interior

| | |
|-------------------|---|
| Interior Features | Kitchen Island, Skylight(s), Vinyl Windows |
| Appliances | Dishwasher, Microwave, Washer/Dryer, Window Coverings, Gas Oven |
| Heating | Forced Air, Propane |
| Cooling | None |
| Has Basement | Yes |
| Basement | Finished, Full |

Exterior

| | |
|-------------------|---------------------------------|
| Exterior Features | BBQ gas line, Dog Run, Fire Pit |
| Lot Description | Level, Pasture |
| Roof | Asphalt Shingle |
| Construction | Wood Frame |
| Foundation | Poured Concrete |

Additional Information

| | |
|----------------|----------------------|
| Date Listed | September 11th, 2025 |
| Days on Market | 5 |
| Zoning | CR/AG |

Listing Details

Listing Office

RE/MAX Landan Real Estate

Data is supplied by Pillar 9â„¸ MLSÂ® System. Pillar 9â„¸ is the owner of the copyright in its MLSÂ® System. Data is deemed reliable but is not guaranteed accurate by Pillar 9â„¸. The trademarks MLSÂ®, Multiple Listing ServiceÂ® and the associated logos are owned by The Canadian Real Estate Association (CREA) and identify the quality of services provided by real estate professionals who are members of CREA. Used under license.