

\$1,550,000 - 20, 29302 Range Road 12, Rural Mountain View County

MLS® #A2257235

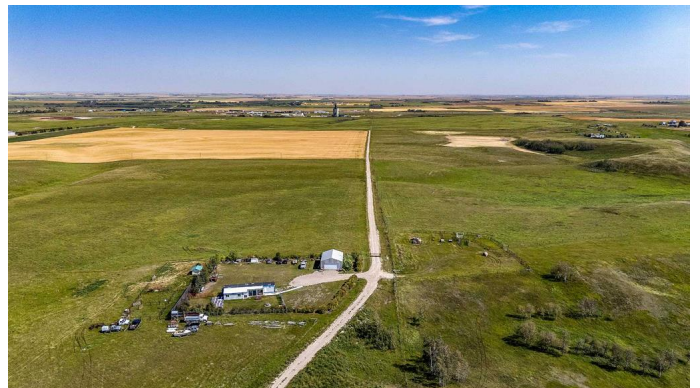
\$1,550,000

0 Bedroom, 0.00 Bathroom,
Land on 160.00 Acres

NONE, Rural Mountain View County, Alberta

FULL QUARTER SECTION in an AMAZING LOCATION, just NW of Crossfield and SW of Carstairs! Just off HWY 2 on Range Road 12 you will not find a better location than this one!

This quarter is currently rented out for pasture until November! There is oil and gas revenue from Taqua! The 30x40 shop is heated, insulated and has concrete! There is an partial older set of utilities on the property. Do not miss out on the opportunity, call today to view!



Essential Information

MLS® #	A2257235
Price	\$1,550,000
Bathrooms	0.00
Acres	160.00
Type	Land
Sub-Type	Residential Land
Status	Active

Community Information

Address	20, 29302 Range Road 12
Subdivision	NONE
City	Rural Mountain View County
County	Mountain View County
Province	Alberta
Postal Code	T0M 0M0

Additional Information

Date Listed	September 16th, 2025
Days on Market	1
Zoning	1

Listing Details

Listing Office	RE/MAX Rocky View Real Estate
----------------	-------------------------------

Data is supplied by Pillar 9â„¢ MLSÂ® System. Pillar 9â„¢ is the owner of the copyright in its MLSÂ® System. Data is deemed reliable but is not guaranteed accurate by Pillar 9â„¢. The trademarks MLSÂ®, Multiple Listing ServiceÂ® and the associated logos are owned by The Canadian Real Estate Association (CREA) and identify the quality of services provided by real estate professionals who are members of CREA. Used under license.