

\$899,900 - 82060 Range Rd 191, Rural Lethbridge County

MLS® #A2257343

\$899,900

5 Bedroom, 4.00 Bathroom, 2,644 sqft
Residential on 1.05 Acres

NONE, Rural Lethbridge County, Alberta

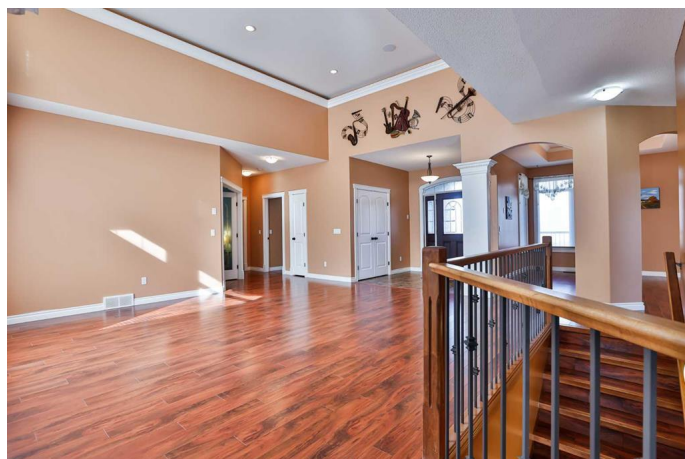
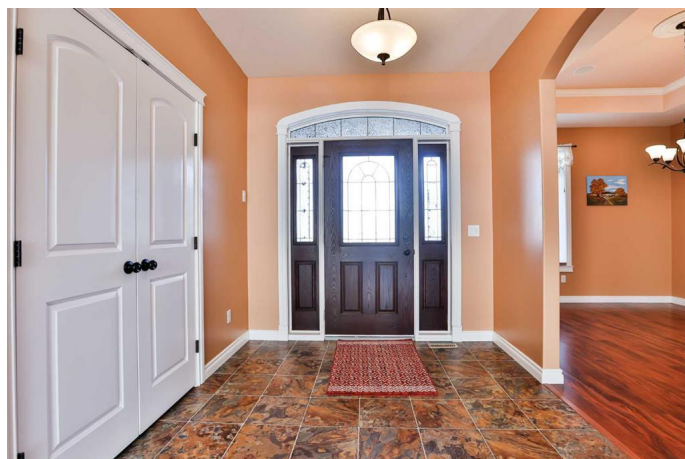
This custom-built bungalow sits on a private acreage and offers over 5,000 sq. ft. of developed living space, including more than 2,600 sq. ft. on the main level. With 5 bedrooms and 3.5 bathrooms, itâ€™s designed for spacious main-floor living.

The highlight of this property is the detached heated shop with 220V power â€“ perfect for projects, storage, or hobbies. An attached garage adds convenience, and the acreage is offered as a truly turn-key opportunity, with extras like a skid steer, ride-on zero-turn mower, and trailer with water tanks included.

Inside, the main floor features vaulted ceilings, a large living and dining area, and a chefâ€™s kitchen with quality finishes. The primary suite includes a 6-piece ensuite with double tiled shower, jetted tub, and direct access to the covered 8-person hot tub. Two more bedrooms share a Jack & Jill bathroom, while a private office provides a quiet work space.

The fully developed basement, warmed with in-floor heating, includes a spacious family/games room ready for a pool table, a roughed-in bar wall, two more bedrooms, a full bathroom, and a studio with plumbed sink and direct access to the garage.

Outdoors, enjoy your custom partially covered



deck, BBQ, and patio with firepit, while taking in the peaceful scenery and wide-open skies. This acreage offers endless opportunities â€” from stargazing on quiet nights to hosting unforgettable family gatherings, weddings, and celebrations.

Located just 25 minutes from Lethbridge and close to Indian Hill Golf Course, this property is move-in ready and truly turn-key. Be sure to view the virtual tour and photos to see everything this acreage has to offer.

Built in 2010

Essential Information

MLS® #	A2257343
Price	\$899,900
Bedrooms	5
Bathrooms	4.00
Full Baths	3
Half Baths	1
Square Footage	2,644
Acres	1.05
Year Built	2010
Type	Residential
Sub-Type	Detached
Style	Acreage with Residence, Bungalow
Status	Active

Community Information

Address	82060 Range Rd 191
Subdivision	NONE
City	Rural Lethbridge County
County	Lethbridge County
Province	Alberta
Postal Code	T0K0R0

Amenities

Parking Spaces	2
----------------	---

Parking	Double Garage Detached, Garage Door Opener, Oversized, RV Access/Parking, Gravel Driveway
---------	---

# of Garages	2
--------------	---

Interior

Interior Features	Ceiling Fan(s), Double Vanity, Kitchen Island, Separate Entrance, Stone Counters, Storage, Tray Ceiling(s), Vinyl Windows, Walk-In Closet(s)
-------------------	--

Appliances	Built-In Gas Range, Central Air Conditioner, Dishwasher, Garage Control(s), Microwave, Oven-Built-In, Range Hood, Refrigerator, Tankless Water Heater, Washer/Dryer, Window Coverings
------------	---

Heating	Boiler, Central, In Floor, Solar
---------	----------------------------------

Cooling	Central Air
---------	-------------

Fireplace	Yes
-----------	-----

# of Fireplaces	2
-----------------	---

Fireplaces	Gas, Living Room, Master Bedroom
------------	----------------------------------

Has Basement	Yes
--------------	-----

Basement	Exterior Entry, Finished, Full
----------	--------------------------------

Exterior

Exterior Features	Barbecue, BBQ gas line, Fire Pit, Garden, Lighting, Private Entrance, Private Yard, Storage, Gray Water System
-------------------	--

Lot Description	Front Yard, Landscaped, Many Trees, No Neighbours Behind, Private, Secluded, Treed, Underground Sprinklers, Views, Close to Clubhouse
-----------------	---

Roof	Asphalt Shingle
------	-----------------

Construction	Concrete, Stone, Vinyl Siding, Wood Frame
--------------	---

Foundation	Poured Concrete
------------	-----------------

Additional Information

Date Listed	September 16th, 2025
-------------	----------------------

Days on Market	1
----------------	---

Zoning	Country Residential
--------	---------------------

Listing Details

Listing Office	RE/MAX REAL ESTATE - LETHBRIDGE
----------------	---------------------------------

Data is supplied by Pillar 9â„¢ MLS® System. Pillar 9â„¢ is the owner of the copyright in its MLS® System. Data is deemed reliable but is not guaranteed accurate by Pillar 9â„¢. The trademarks MLS®, Multiple Listing Service® and the associated logos are owned by The Canadian Real Estate Association (CREA) and identify the quality of services provided by real estate professionals who are members of CREA. Used under license.