

\$204,900 - 328, 10402 111 Street, Grande Prairie

MLS® #A2258171

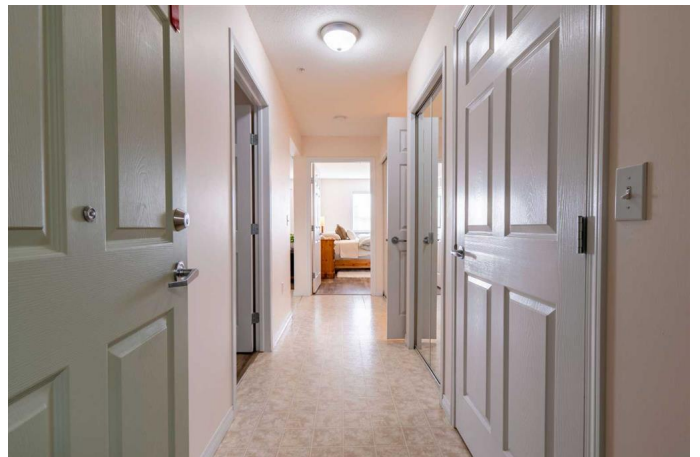
\$204,900

2 Bedroom, 1.00 Bathroom, 784 sqft

Residential on 0.00 Acres

Gateway., Grande Prairie, Alberta

Welcome to Emerald Gardens! Owning your own condominium offers you the best of all living options. Your fully equipped personal suite provides complete independent living but if you need a little help that can be arranged too (as a fee for service or through Home Care). The full kitchen is well planned for meal prep and is open to the large living area to visit with friends and family. The primary bedroom will easily accommodate a queen bed, side tables and a large dresser. A second room is perfect for an office or craft room and the storage room is a great size for seasonal items, cleaning tools and a small freezer if needed. The bathroom is large enough for using a walker or wheelchair and has a walk-in shower for easy access. Emerald Gardens has many amenities that you can choose to enjoy, like an eat in dining room if you don't feel like cooking, a games room and a large meeting room where events are regularly planned. There are additional activities offered to the residents such as theme parties like Mardi Gras, and Mystery evenings. Fitness classes 3 times per week, crib night, bingo, church services by local ministers, music groups or individuals come in weekly, Breakfast Sundays, and the list goes on. Coffee is always on and treats are served regularly. Monthly condo fees include water, power, gas, garbage, common area exterior and interior, and on site common laundry. Holding a valid drivers license, and having a vehicle gives you the opportunity to apply for a



parking stall. This building is professionally managed and is a great place to call home.his suite is available for immediate occupancy so book your viewing today through your favorite REALTOR®.

Built in 2003

Essential Information

MLS® #	A2258171
Price	\$204,900
Bedrooms	2
Bathrooms	1.00
Full Baths	1
Square Footage	784
Acres	0.00
Year Built	2003
Type	Residential
Sub-Type	Apartment
Style	Multi Level Unit
Status	Active

Community Information

Address	328, 10402 111 Street
Subdivision	Gateway.
City	Grande Prairie
County	Grande Prairie
Province	Alberta
Postal Code	T8V 8G4

Amenities

Amenities	Elevator(s), Fitness Center, Laundry, Parking, Snow Removal, Trash, Visitor Parking, Recreation Room
Parking	None

Interior

Interior Features	No Animal Home, No Smoking Home
Appliances	Dishwasher, Refrigerator, Stove(s)
Heating	Baseboard

Cooling	Wall Unit(s)
# of Stories	4

Exterior

Exterior Features	Other
Construction	Vinyl Siding

Additional Information

Date Listed	September 19th, 2025
Days on Market	1
Zoning	RM

Listing Details

Listing Office	Royal LePage - The Realty Group
----------------	---------------------------------

Data is supplied by Pillar 9â„¢ MLS® System. Pillar 9â„¢ is the owner of the copyright in its MLS® System. Data is deemed reliable but is not guaranteed accurate by Pillar 9â„¢. The trademarks MLS®, Multiple Listing Service® and the associated logos are owned by The Canadian Real Estate Association (CREA) and identify the quality of services provided by real estate professionals who are members of CREA. Used under license.