

\$369,900 - 15 Elreg Street, Penhold

MLS® #A2259108

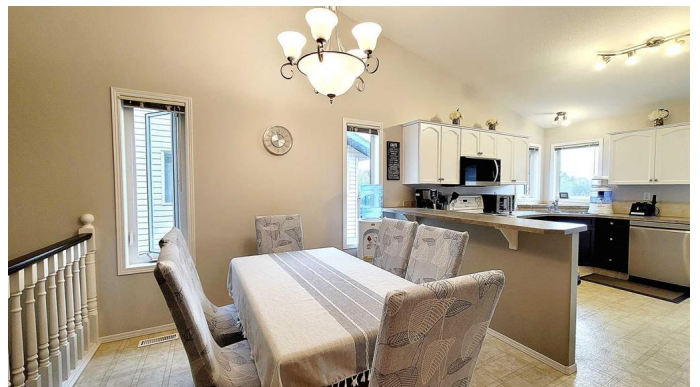
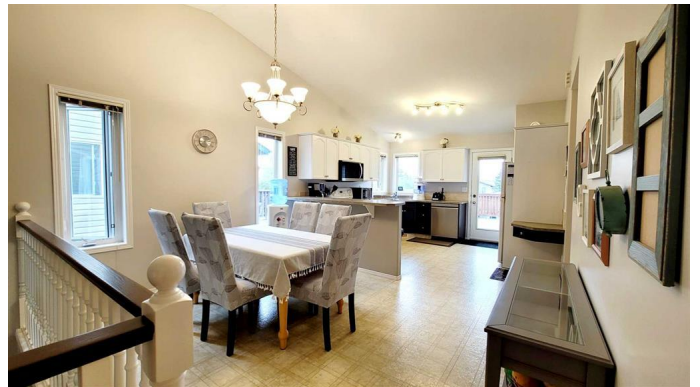
\$369,900

4 Bedroom, 2.00 Bathroom, 1,047 sqft

Residential on 0.13 Acres

Park Place, Penhold, Alberta

Welcome to 15 Elreg Street – a beautifully maintained and fully developed modified bi-level that blends space, functionality in every corner. From the moment you step inside, you™ll be greeted by vaulted ceilings and an abundance of natural light pouring through the oversized front window in the sunken living room, creating an inviting and airy atmosphere. Just a few steps up, the open-concept kitchen and dining area provide an ideal space for both everyday living and entertaining. The U-shaped kitchen features crisp white cabinetry, a corner sink, raised eating bar, tiled backsplash accents, and plenty of counter space for meal prep and gatherings. The new dishwasher and microwave (2024) add even more convenience to this well-equipped space. The upper level also includes two generously sized bedrooms and a full 4-piece bathroom, ideal for families or guests. Downstairs, the fully finished basement expands your living space with a large family room, two additional bedrooms, and a beautifully renovated 3-piece bathroom (2023) – perfect for teens, guests, or a home office setup. The new basement flooring (2022) adds a fresh, modern touch, while the huge under-stair storage area offers clever space-saving solutions. You™ll also find a spacious laundry area with a new dryer (2024) and plenty of room to stay organized. This home has been updated with some mechanical improvements including a new hot water tank (2024), new shingles (spring 2023),



and a battery backup sump pump for added peace of mind. It's also a no-smoking home, ensuring a clean and well-cared-for environment. Step outside to enjoy the fully fenced and landscaped backyard, complete with a newly stained deck, covered front veranda, and mature trees offering beauty and shade. A large rear parking pad provides ample space for vehicles or future garage plans. A welcoming, family-friendly neighborhood with easy access to schools, parks, outdoor skating rink, and local amenities. This move-in ready home offers unbeatable value – just unpack and start enjoying your new space!

Built in 2002

Essential Information

MLS® #	A2259108
Price	\$369,900
Bedrooms	4
Bathrooms	2.00
Full Baths	2
Square Footage	1,047
Acres	0.13
Year Built	2002
Type	Residential
Sub-Type	Detached
Style	Bi-Level
Status	Active

Community Information

Address	15 Elreg Street
Subdivision	Park Place
City	Penhold
County	Red Deer County
Province	Alberta
Postal Code	T0M 1R0

Amenities

Parking Spaces	2
Parking	Additional Parking, Alley Access, Parking Pad, See Remarks, On Street

Interior

Interior Features	No Smoking Home, Sump Pump(s), Vaulted Ceiling(s), Vinyl Windows
Appliances	Dishwasher, Electric Stove, Microwave, Refrigerator, Washer/Dryer, Window Coverings
Heating	Forced Air, Natural Gas
Cooling	None
Has Basement	Yes
Basement	Finished, Full

Exterior

Exterior Features	Storage
Lot Description	Landscaped
Roof	Asphalt Shingle
Construction	Vinyl Siding, Wood Frame
Foundation	Poured Concrete

Additional Information

Date Listed	September 22nd, 2025
Zoning	R1

Listing Details

Listing Office	RE/MAX real estate central alberta
----------------	------------------------------------

Data is supplied by Pillar 9â„¢ MLS® System. Pillar 9â„¢ is the owner of the copyright in its MLS® System. Data is deemed reliable but is not guaranteed accurate by Pillar 9â„¢. The trademarks MLS®, Multiple Listing Service® and the associated logos are owned by The Canadian Real Estate Association (CREA) and identify the quality of services provided by real estate professionals who are members of CREA. Used under license.