

\$439,900 - 10250 87 Street, Grande Prairie

MLS® #A2260121

\$439,900

4 Bedroom, 3.00 Bathroom, 1,720 sqft

Residential on 0.11 Acres

Crystal Landing, Grande Prairie, Alberta

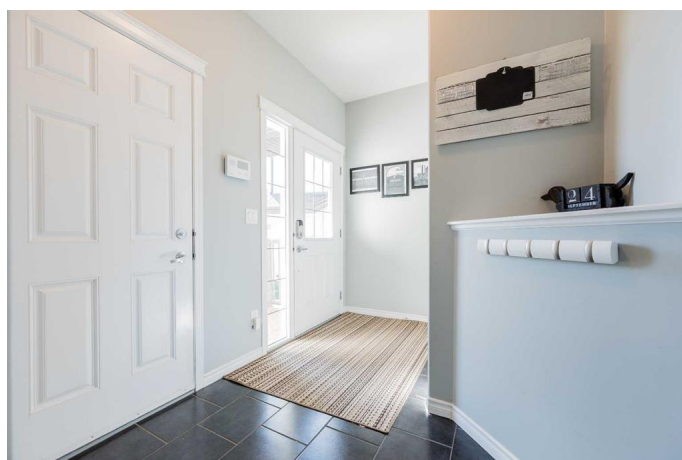
Lakeside living.....walking trails and shopping....excellent family home....WELCOME TO CRYSTAL LANDING. This well cared for family home is sure to impress you from the moment you arrive. Step inside and you are greeted by a beautiful OPEN CONCEPT LIVING ROOM AND KITCHEN featuring STAINLESS STEEL APPLIANCES, PANTRY, FORMAL DINING SPACE w/ ACCESS TO BACKYARD & A COZY GAS FIREPLAC to enjoy on those cool fall and winter nights. Completing the main floor is a conveniently located ADDITIONAL OFFICE/FLEX SPACE, & A 2 PIECE BATHROOM. Make your way upstairs and you will find the SPACIOUS BONUS ROOM for additional comfort. The top floor also features TWO GENEROUSLY SIZED BEDROOMS, UPSTAIRS LAUNDRY, AND PRIMARY BEDROOM SANCTUARY w/ 4 PIECE ENSUITE & SIZABLE WALK IN CLOSET. The basement features an ADDITIONAL BEDROOM and space for future development. Did I mention this home offers NO REAR NEIGHBOURS & IS JUST STEPS AWAY FROM PLAYGROUNDS & IVY LAKE! Welcome to a beautifully kept family property.....WELCOME HOME!

Built in 2013

Essential Information

MLS® #

A2260121



Price	\$439,900
Bedrooms	4
Bathrooms	3.00
Full Baths	2
Half Baths	1
Square Footage	1,720
Acres	0.11
Year Built	2013
Type	Residential
Sub-Type	Detached
Style	2 Storey
Status	Active

Community Information

Address	10250 87 Street
Subdivision	Crystal Landing
City	Grande Prairie
County	Grande Prairie
Province	Alberta
Postal Code	T8X 0M5

Amenities

Parking Spaces	4
Parking	Double Garage Attached
# of Garages	2

Interior

Interior Features	Laminate Counters
Appliances	Dishwasher, Electric Stove, Microwave Hood Fan, Refrigerator, Washer/Dryer
Heating	Forced Air
Cooling	None
Fireplace	Yes
# of Fireplaces	1
Fireplaces	Gas
Has Basement	Yes
Basement	Full, Partially Finished

Exterior

Exterior Features	Other
Lot Description	Landscaped, Lawn, No Neighbours Behind, Lake
Roof	Asphalt Shingle
Construction	Stone, Vinyl Siding
Foundation	Poured Concrete

Additional Information

Date Listed	September 25th, 2025
Days on Market	1
Zoning	RS Small Lot Residential

Listing Details

Listing Office	RE/MAX Grande Prairie
----------------	-----------------------

Data is supplied by Pillar 9â„¢ MLS® System. Pillar 9â„¢ is the owner of the copyright in its MLS® System. Data is deemed reliable but is not guaranteed accurate by Pillar 9â„¢. The trademarks MLS®, Multiple Listing Service® and the associated logos are owned by The Canadian Real Estate Association (CREA) and identify the quality of services provided by real estate professionals who are members of CREA. Used under license.