

# \$699,000 - 366 Bridleridge View Sw, Calgary

MLS® #A2261362

**\$699,000**

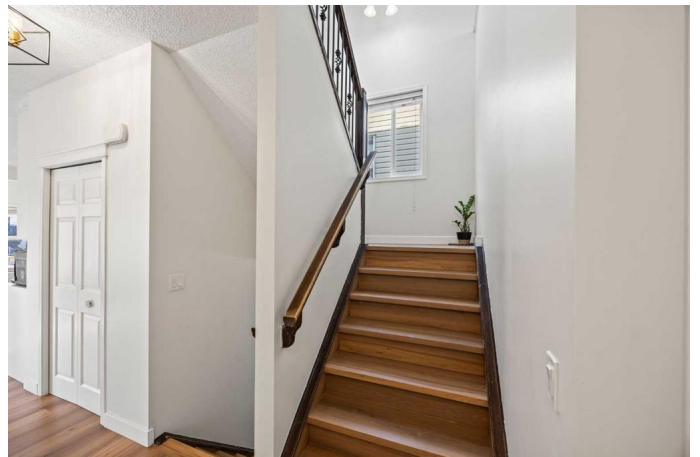
4 Bedroom, 3.00 Bathroom, 1,834 sqft

Residential on 0.09 Acres

Bridlewood, Calgary, Alberta

Welcome to 366 Bridleridge View SW, a beautifully maintained 4-bedroom, 2.5-bathroom home offering 2,571 sq. ft. of thoughtfully designed living space in the family-friendly community of Bridlewood. The main floor is bright and inviting with expansive windows, an open-concept great room featuring a cozy gas fireplace, and a dedicated front office perfect for remote work or study. The kitchen has been recently refreshed with new cabinetry (2024), a brand-new stove and dishwasher (2025), and offers a central island and pantry for ample storage. The dining area flows seamlessly to the backyard deck, creating an ideal setting for both daily living and entertaining. Upstairs, the spacious master retreat includes a walk-in closet and a 5-piece ensuite with a soaker tub and separate shower. Three additional bedrooms and a convenient second-floor laundry room provide comfort and practicality for busy households.

The fully finished basement adds even more versatility, featuring a fourth bedroom and flexible living space that can serve as a media room, home gym, or play area. This move-in-ready home has been freshly painted (2025) and enhanced with luxury vinyl flooring (2024), combining style with low-maintenance durability. Outside, the property offers a front attached double garage, a fully fenced yard, and a deck perfect for summer barbecues or relaxing evenings. Located just minutes from schools, parks, shopping, Spruce Meadows,



and the Ring Road, this home delivers the perfect balance of comfort, convenience, and community lifestyle.

Don't miss the opportunity to make this upgraded, ready-to-move-in property your new home.

Built in 2008

**Essential Information**

MLS® #	A2261362
Price	\$699,000
Bedrooms	4
Bathrooms	3.00
Full Baths	2
Half Baths	1
Square Footage	1,834
Acres	0.09
Year Built	2008
Type	Residential
Sub-Type	Detached
Style	2 Storey
Status	Active

**Community Information**

Address	366 Bridleridge View Sw
Subdivision	Bridlewood
City	Calgary
County	Calgary
Province	Alberta
Postal Code	T2Y 0E5

**Amenities**

Parking Spaces	4
Parking	Double Garage Attached
# of Garages	2

**Interior**

Interior Features	Bathroom Rough-in, Breakfast Bar, Closet Organizers, High Ceilings, Kitchen Island, No Animal Home, No Smoking Home, Open Floorplan, Pantry, Quartz Counters, Storage, Walk-In Closet(s), Wired for Data
Appliances	Built-In Oven, Dishwasher, Microwave Hood Fan, Washer/Dryer, Built-In Electric Range
Heating	Forced Air
Cooling	None
Fireplace	Yes
# of Fireplaces	1
Fireplaces	Gas
Has Basement	Yes
Basement	Finished, Full

## Exterior

Exterior Features	Barbecue, Garden, Private Entrance, Storage
Lot Description	Back Lane, Back Yard, City Lot, Front Yard, Garden, Landscaped, Low Maintenance Landscape, Private, Rectangular Lot
Roof	Asphalt Shingle
Construction	Stone, Vinyl Siding, Wood Frame
Foundation	Poured Concrete

## Additional Information

Date Listed	October 1st, 2025
Days on Market	2
Zoning	R-G

## Listing Details

Listing Office	Brilliant Realty
----------------	------------------

Data is supplied by Pillar 9â„¢ MLS® System. Pillar 9â„¢ is the owner of the copyright in its MLS® System. Data is deemed reliable but is not guaranteed accurate by Pillar 9â„¢. The trademarks MLS®, Multiple Listing Service® and the associated logos are owned by The Canadian Real Estate Association (CREA) and identify the quality of services provided by real estate professionals who are members of CREA. Used under license.